

# Annual Report

## 2018-19



*Empowering People*

# Life Education and Development Support

## Acknowledgement

*Our sincere thanks to the following dignitaries who have supported us in course of our journey in the year 2018-19*

1. **Ms. Neera Yadav**, Minister, Human Resource Development, GoJ
2. **Mr. C. P. Singh**, Minister, Urban Development, Govt. of Jharkhand
3. **Mr. Saryu Rai**, Minister- Food, Public Distribution & Consumer Affairs, GoJ
4. **Mr. Nilkanth Singh Munda**, Minister of Parliamentary Affairs & Rural Development, GOJ
5. **Ms. Aradhana Pattanayak**, , Principal Secretary, Water & Sanitation Dept, GoJ
6. **Mr. D K Tiwari**, Chief Secretary, GOJ
7. **Mr. A P Singh**, Principal Secretary, Department of School Education & Literacy
8. **Mr. Sanjay Kumar Singh**, General Secretary, JRPSS
9. **Mr. Sanjeev Vijayvargiya**, Deputy Mayor, Ranchi Municipal Corporation
10. **Mr. Uma Shankar Singh**, SPD, JEPEC
11. **Mr. S.C. Ghosh**, D.S.E. Khunti.
12. **Mr. Suraj Kumar**, D.C, Khunti
13. **Mr. B. K. Dash**, DGM, NABARD
14. **Mr. Paritosh Upadhyay**, C.E.O, JSLPS, Government of Jharkhand
15. **Ms. Madhulika**, State Head, UNICEF, Jharkhand
16. **Mr. Amitabh Behar**, CEO, Oxfam India
17. **Ms. Ranjana Das**, Regional Manager, Oxfam India
18. **Mr. Mahadev Hansda**, State Head, Save the Children, Jharkhand
19. **Mr. Oliver Martin**, CEO, BfdW
20. **Ms. Gerlind Schneider**, PO, BfdW
21. **Ms.Per Spix**, BfdW
22. **Mr. Harsh Jaitli**, CEO, VANI
23. **Mr. Sushant Verma**, Director, Trickle Up
24. **Mr. Ravi Agrawal**, Deputy Director
25. **Ms. Sashmita Jena**, State Coordinator, WHH
26. **Mr. Premchand**, WASH Specialist, UNICEF, Jharkhand
27. **Ms. Parul Sharma**, Education Specialist, UNICEF, Jharkhand
28. **Mr. Subrat Das**, Director, CBGA, Delhi
29. **Mr. Ambarish Rai**, National Convener, NRTEF, Delhi
30. **Mr. Anil Kr. Singh**, Director, SANSAD, Founder Member of WNTA
31. **Mr. Madhukar**, Sr. Journalist and Advisor of LEADS
32. **Prof. Ramesh Sharan**, Vice Chancellor, Vinova Bhawe University
33. **Dr. H. Dayal**, Economist and Director, IHD, Ranchi, Jharkhand
34. **Mr. Balram Jo**, Advisor to Commissioner of Supreme Court on Social and Food Security Scheme
35. **Prof. M.H. Ansari**, Ex HOD, DRD, XISS, Ranchi
36. **Dr. Vishnu Rajgadia**, Director, Jharkhand Foundation

## *Message from the Director's Desk*



**“The Future belongs to those who prepare for it today” - Malcolm X**

I am delighted to share with you the swell of emotions and heartfelt warmth as we complete another year of exciting journey of LEADS. In December 2005, we embarked on this mission of empowering and giving appropriate life education and development support to the communities. We had set a modest goal of ensuring rights of every individual to provide ample scope for development of all sections of society which will further help in unfolding human potentials and building confidence of poor and marginalized community.

Now as we watch the thousands of members of marginalized communities lighting up their lives by adopting various models developed by us, we take a bow in honor of all the stakeholders involved in the process. Their trust is our wealth, their achievements are our glory and their empowerment is our enlightenment!

Eyeing the Sustainable Development Goals, we are firm with our responsibility and accountability to deliver right based multidisciplinary development programmes to equip the referral group to be well versed in dynamic processes to sustain the efforts. This involves sharpening the pedagogy while maintaining social rigor and relevance to the community we work with.

As we share the journey of our endeavors in the year 2018-19, we rededicate ourselves to uphold the trust reposed in us by our stakeholders.

Looking forwards to continue our work with the community, for the community!

**A K Singh**

Managing Trustee & Director

## Contents

Sl No	Topics	Page no
1	<b>ABOUT LEADS</b> LEADS background Ideology Core Guiding Principles Vision, Mission General Objectives Referral group Area of Interventions Thematic Issues	5 - 7
2	<b>THEMATIC INTERVENTIONS</b> Direct Engagement With Community Network, lobby & Advocacy Research, Documentation/Publication Promotional and Professional Support	7 - 9
3	<b>ORGANISATION RESOURCES</b> Assets & Infrastructure <ul style="list-style-type: none"> <li>• Leads Resource Center</li> <li>• Demonstration Plots</li> <li>• Development Models</li> </ul> Human Resources	10 - 11
4	<b>OUR ENDEAVORS IN YEAR 2018-19</b> <b>Project wise Reports</b> Promotion of Women Farmers for Sustained Livelihood MGNREGA - NRLM Convergence CFT Strategy Entitlement Realization of Marginalized Community through Empowerment Rural Empowerment for Entitlement Realization Community Engagement for Sustainable Development and Financial Inclusion of the Ultra Poor Bal Sashaktikaran Abhiyan- Ensuring Nutrition and Education Rights of children Reducing Inequality in India An Initiative of Transparent and Accountable Governance System in Jharkhand Water Sanitation and Hygiene in Schools (WINS) <b>State Level Programs Held by LEADS</b>	12 - 33
5	<b>GOVERNANCE OF LEADS</b> LEADS Policies & Guidelines Board meetings & Attendants Benefits taken by Board Members Declaration of Engagement of Relatives of Board Members Profile of Board Members Women Composition in the Organisation	34 - 35
6	<b>DISCLOSURES</b> Entity Financial Disclosures	36 - 44
7	Our Partners in Development	45
8	Accreditation of LEADS by Credibility Alliance	45
9	Our Publications	46
10	LEADS in Media	47
11	Capacity Building Programme of LEADS	48

## 1.ABOUT LEADS

### LEADS Background

A group of rural development professionals joined their hands to establish an organisation, which can professionally respond to issues which are affecting lives of poor and marginalised people of Jharkhand. As an outcome “Life Education and Development Support” (LEADS) came into existence on 14<sup>th</sup> Dec 2005. LEADS is a not for profit, development organisation registered under Trust Act (1882) on 14<sup>th</sup> Dec 2005 at Ranchi, Jharkhand.

### Ideology

LEADS believes that every individual has immense inner potentials irrespective of caste, creed, religion and sex. These verities of inner potentials can be unfolded and promoted for better utilization which can bring positive changes in the society. The overall development interventions of LEADS are centered to this ideology itself. LEADS is an ideology driven organisation and planning of LEADS is done based on its ideology which provides us strength to look for long term vision for poor and marginalized sections of our society.

### Core Guiding Values/Principles

- Participation and Cooperation
- Gender Equity and Justice
- Decentralisation of Decisions Making Process
- Collective Leadership both at Community and Organisation Level
- Respect to Humanity, Peace and Justice
- Team Work
- Inclusion of Passionate Persons in the COLLECTIVE LEADERSHIP of LEADS

### Vision

LEADS aspires for a society where all have equal access and control over resources/ services irrespective of caste, creed, religion, economic status and sex necessary for quality and dignified life. The values like participation, equity, mutual respect, peace and justice to people and nature will prevail in society. Earth will be a better place to lead a dignified life for generations to come.

### Mission

LEADS is committed to issues like Quality Education to all, Ensuring Child Rights, Assured Livelihood to most marginalised, Women empowerment, Promotion of Skilled Human Resources, Health, Empowering PRIs etc in course of its interventions. Participatory approach will be core element in LEADS development interventions. Empowerment of community and



convergence with state and other prog will be focussed in the grassroots intervention to create resource based within community.

### General Objectives

- **To create awareness** among the referral communities to unfold their potentials and ensure realisation of Govt schemes and entitlements, RTE Act 2009, Livelihood options, opportunities available for communities and other communities rights.
- **To promote collective self confidence** of community by promoting CBOs like Gram Sabhas, SHGs, SMC, Bal Sansad, Farmers Club, Producer Group etc across the intervention areas.
- **To ensure community convergence** with state schemes, entitlements, livelihood opportunities, natural resources, agri activities, SDGs etc as livelihood options.
- **To create development models** on various themes like education, health, livelihood, natural resource promotion, water conservation, WASH in schools, plantation etc and facilitate its replication with various agencies.
- **To build capacity of small and grassroots** organisation for quality intervention in the communities and advocacy at state level for improvements in govt services and community participation in availing those services.
- **To conduct issue based survey, research and study** to improve the quality of development interventions.
- **To publish issue based research** reports, publications, manuals, booklets, postures, handbills etc to support quality development interventions.
- **To provide consultancy services / professional support** and issue based human resource to other organisations, networks, resource agencies, Govt agencies etc as per need to enhance the quality of intervention.
- **To make thematic linkages** with national and international development agencies to improve quality of intervention of LEADS and its partners focussing more on SDGs.

### Our Referral People

- Children of Age Group 0-18 Yrs, Lactating and Pregnant Mothers
- Scheduled Tribes, Scheduled Castes, Women, Farmers
- Adolescent and Youths
- Person with Disability (Dibyang)
- Ultra Poor of all communities
- Other Economically Backward Groups

### Area of intervention

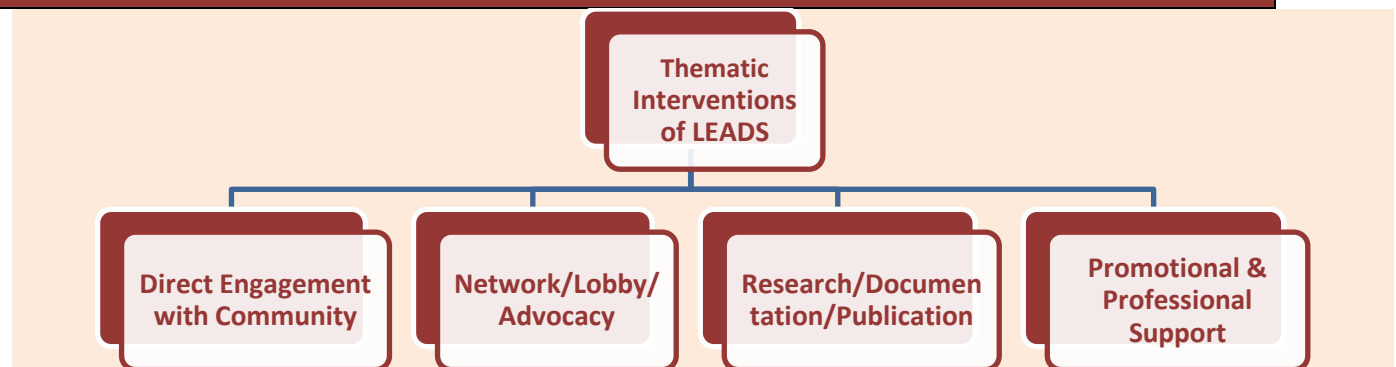
The districts in which LEADS is operational include Ranchi, Khunti, Ramgarh, Hazaribagh, Simdega, Latehar, Lohardaga, Saraikella Kharsawan, West Singhbhum & Gumla.

*Network and promotional activities are undertaken in all the 24 districts of Jharkhand.*

### Thematic Issues

- **Promotion of CBOs** (SHGs, Producer Group, School Management Committee, Bal Sansad etc)
- **Child Rights**, Education and Child Protection
- **Livelihood** (Agriculture, Natural Resources and Animal Husbandry, Right to Food etc)
- **Women Empowerment** and Gender Equity
- **Promotion of Sustainable Environment & Energy Solutions**
- **Health** and Nutrition
- **Sustainable Development Goals (SDGs)**
- **Promotion of PRIs** for planning, budgeting and implementation of development schemes.
- **WASH/WASH in Schools/Menstrual Health Management.**
- **Analysis of State Budget/Gender Budget/Child Budget**
- **Convergence** with state schemes and entitlements.

## 2. THEMATIC INTERVENTIONS



### Direct Engagement with Community

LEADS is working directly in more than 3000 villages in West Singhbhum, Latehar, Khunti, Ramgarh, Hazaribagh, Simdega, Saraikela, Lohardaga, Gumla and Slums of Ranchi. The organisation is working with Gram Sabhas, SHGs, Farmers Clubs, Social Leaders Group, School Management Committees (SMCs), Bal Sansads, Parent Teachers Associations, Federations, Clusters, Marketing Groups, etc. LEADS aims at promoting delivery of quality services in the intervention areas following certain guiding standards:

- Agriculture and Natural Resource Promotion
- Animal Husbandry Promotion for Sustainable Livelihood
- Health Facilities and RCH
- Anganwadi Facilitation Prog/ECCE
- Water, Sanitation & Hygiene
- Quality Elementary Education
- Gender Equity
- Convergence and Community Assetisation
- Plantation and Environment Protection
- Employable Skill Program

- Ultra Poor Promotion Plan
- Clean Energy
- Radio for Community
- Promotion of PRIs

### Network/Lobby/ Advocacy

#### State Network, Lobby and Advocacy

LEADS has been working at the grassroots level and at the same time, playing a role of lobbyist and advocator for replication and promotion of its best practices and findings of its various studies and observations. LEADS is pioneers in taking up various issues at district, state, national and international level which is pro people and has potential to bring changes in the life of most marginalized section of the society. Mr. A K Singh, Director, LEADS, is the state convener of the following networks:

1. *Jharkhand Right to Education Forum (JRTEF)*
2. *Jharkhand Voluntary Action Network (JHARVAN)*
3. *Jharkhand State Budget Group (JSBG)*
4. *State SDGs Alliance (SSDGA)*

#### National and International Networks Lobby and Advocacy

**Mr. A K Singh, Director, LEADS is steering group member of following network at national/ international level:**

1. *National Right to Education Forum*
2. *People's Budget Initiative (PBI)*
3. *Wada Naa Todo Abhiyan (WNTA)*
4. *Voluntary Action Network of India (VANI)*
5. *National CSR Alliance*
6. *GCAP-India*

### Research/Documentation/Publication

The human resources associated with LEADS have been doing research and issue based publications, manual preparation etc for enriching the development interventions on different thematic issues. This work will be further reinforced to utilize the organization's professional qualities. In LEADS, there is a Publication Committee who looks after the overall publication materials with quality contents. Our publications are in the form of newsletters, books, flip book, manuals, leaflets, pamphlets, posters, audio- visuals etc. This work will be further reinforced to utilize the organization's professional qualities and support the one who need such information. LEADS has publication on all themes of LEADS intervention for reaching effectively to the common mass. Some of them are as follows:

Digital Publication	IEC	Research
<ul style="list-style-type: none"> <li>• Right to Education Act</li> <li>• Community Radio</li> <li>• Ek Pahal</li> <li>• Village Health and Sanitation and</li> </ul>	<ul style="list-style-type: none"> <li>• Bal Sansad</li> <li>• School Management Committee (SMC)</li> <li>• School Development Plan (SDP)</li> <li>• Aflatoun Social and Financial Education</li> <li>• WASH in School</li> </ul>	<ul style="list-style-type: none"> <li>• Gender Responsive Budgeting</li> <li>• Implementation status of RTE Act 2009</li> <li>• Tribal Sub plan</li> <li>• State Budget</li> </ul>



Nutrition Committee (VHSNC) <ul style="list-style-type: none"> <li>• Health and Nutrition</li> <li>• Swachha Bharat Mission</li> <li>• Tamarind Value chain</li> <li>• Sustainable Agriculture</li> <li>• Lac Cultivation</li> <li>• Mango Plantation</li> <li>• Goatary</li> </ul>	<ul style="list-style-type: none"> <li>• Village Health Nutrition Day (VHND)</li> <li>• Integrated Livestock Development Centre (Goat bank, Pashu Sakhi Model)</li> <li>• Tamarind value chain-Processing unit /Oil seed</li> <li>• Mango Plantation-Intercropping</li> <li>• Annapurna Crop Model</li> <li>• 36x36 Kitchen Garden</li> <li>• 10 decimal veg. crop model</li> <li>• SRI</li> <li>• Lac cultivation</li> <li>• Government schemes</li> <li>• Social Leaders training manual</li> <li>• Panchayat Raj</li> <li>• Van Adhikar</li> <li>• Water Conservation</li> <li>• Panchayat Budget Manual</li> <li>• MGNREGA</li> </ul>	Allocation on Social Security Schemes <ul style="list-style-type: none"> <li>• Study and Trace SDGs Among Social Excluded Community (100 hot spots)</li> <li>• Situation analysis of Renewal Energy Policies and Programmes in Jharkhand</li> </ul>
---	---	---

### Promotional & Professional Support

LEADS offers different types of services, training to grass root level organisation, Donor partner Organisation, Donors and Govt Organisation. Various programmes are conducted by LEADS for the different Stakeholders and CSOs. LEADS has a professional background and a rich experience of providing consultancy/professional support to various civil society organizations, resource organizations, training institutions, networks etc in their endeavor. We have expertise in training on the themes mentioned below:

- Child Rights
- RTE, SMC, Bal Sansad
- School Development Plan
- Promotion of SHGs
- PRA and Micro Plan
- PRI and Gram Sabha
- Gender Sensitization Women Empowerment
- Social leadership Development
- Participatory M & E
- MGNREGA, RTI and RTE
- Tribal Rights
- Livelihood and Food Security
- Participatory Strategic Planning
- Organization Development

### 3.ORGANISATION RESOURCES

#### Assets & Infrastructure

LEADS has 2.81 Acre of land, where three kindergartens and one residential training centre are in function at different locations in Murhu Block of Khunti district. Organization has well equipped head office at Ranchi with all required facilities. Organization has 3 four wheelers, 16 two wheeler, required number of Laptop, Computers, Camera, Furniture and Fixture, LCD projector, Scanner, Wi-Fi enabled office premises, Fax etc. One well equipped meeting hall is attached with office at Ranchi. We have also 7 offices in Mahudanr of Latehar, Badngaon of West Singhbhum, Murhu and Torpa in Khunti, Kalebira in Simdega and Kujju in Ramgarh district.

#### LEADS Resource Center



LEADS has promoted a Resource Centre to develop human resources in rural set up at Perka Village of Murhu Block in Khunti District. The centre is situated in picturesque location and having various waterfalls surrounding it namely Panchghagh (10 Km), Rani Fall (10 Km), Hirni Fall (30 km), Dasam Fall (30 km), Perwaghagh (25 km) etc. This Well equipped Training Centre has 14 Rooms and 2 halls.



**Demonstration Plot:** LEADS has promoted organic farming and various plants, Agri practices inside the campus which have been practically shown and also related museum to show processes of organic farming, solar energy model and other models.

**Development Models:** LEADS has promoted various models of Birsa Munda Mango Orchard with intercropping, Annapurna Model, 36 x 36 Model for small and marginal farmers, Tamarind value chain, Ragi value chain, Swachha Urja Gram,

**Model Anganwadi, Model Schools** having compliance of RTE Act 2009 and many more in its vicinity for exposure of Govt and Non Govt people for learning and replicating in other locations.

**Facilities:** LEADS resource centre has facility for residential training of more than 200 participants. Round the clock electricity, Internet Facility, Drop and Pick up facility from Khunti / Ranchi on paid basis, LCD, Well equipped Training hall of various capacity etc. are available.

**Who has Organised Training:** JSLPS-GoJ, Social Audit Unit- GoJ, Andheri Hilfe Bonn, Trickle Up Kolkata, LEADS various Programs, KGVK, SPWD etc.

**What Can Be Organised:** Training, Exposure, Immersion, Countryside Trip, Retreat, Rural learning, Social and Cultural learning etc.

**How to Reach:** Neel Factory is situated on Khunti Murhu Raod at the Distance of 7 Km. Take the Perka Road along with Boundary of Neel Factory. LEADS Resource Centre is at the distance of 1 Km from Neel Factory.

## Human Resources

LEADS has 300 paid staffs (Part time and Full Time) and consultants and more than 400 volunteers to facilitate the programmes at different levels like State, District, Block and Field. Out of the these paid staffs, almost 80 have different professional backgrounds or higher education like, PGDRD, LLB, MBA, Msc. Agri, PhD, MA Mass Communication, Civil Engineer, Economist and other different professional backgrounds.. LEADS

also has external dignified resource pool, from different sectors like Media, University, Professional Institutions, CSOs, Individual Activists etc. LEADS TEAM has various expertise on Education, Child Rights, Livelihood programme, Budget Tracking in context of Jharkhand, Panchayati Raj Institutions and Gram Sabha, Women Rights / Women Emancipation, Agriculture / Horticulture, Health, CBOs like SHG, Bal Sansad, School Management Committee (SMC), Farmers Clubs, etc. The organization can also facilitate National and International events on different issues.

*Apart from the above list, more than 150 paid volunteers and over 2000 social leaders are deeply involved in various development activities across our intervention area.*



## 4. OUR ENDEAVORS IN THE YEAR 2018-19

### Project wise Status Reports for 2018-19

#### (i) Project Title: “Promotion of Women Farmers for Sustained Livelihood”

1	Project Location and Intervention Area	Murhu block of Khunti dist., Bandgaon block of West Singhbhum dist., Mahuadanr block of Latehar dist.
2	Theme/Issues	Livelihood, Women Empowerment, Bio-diversity
3	Project Duration	April 2014 to June 2020
4	Referral Group	Women Farmers, SHG, Producer Group and Women Federation
5	Direct Beneficiaries	3030
6	No of Indirect Beneficiary	6500
7	Support Agency	NRLM-JSLPS, Govt. of India and Govt. of Jharkhand

#### Achievement of the year

Parameters	Annual Target	Achievement	%Achievement
No. of Women farmers covered under NRLM compliant SHGs	3030	3237	107
No. of SHGs covered	264	264	100
No. of Cluster Level/Block level Federations covered	3	3	100
Number of village level Producers'/Collectors' Groups formed	120	130	108
Number of SHG members who are part of Producer's/Collector's groups.	900	870	97
Landholding under Sustainable Practices			
Total Agricultural area of Women Farmers in the area of operations (Gross cropped area)	720	680	94
Gross cropped area in acres under Sustainable Agriculture of MKSP owned by Mahila Kisan	800	770	96
No. of women farmers trained on MKSP protocols	3030	3237	107
No. of trainings conducted under MKSP: For Mahila Kisan	20	20	100
Physical Assets Created through leveraged funds			97
Mini sprayer-50, Antivector net- 1000 mtr, Plastic for Azolla=1000 mtr, Nylon Net = 1000 mtr	150000	145000	
Output			
Women Farmers covered under MKSP	3030	3238	107
Rice - SRI (Jeera phool)	800	656	82
Pigeon Pea (0.20 acre)	1500	1531	102
Agri Nutrition Garden (0.1- 0.1.5 acre)	1250	1240	99
Potato (0.20 acre)	3000	3010	100

Wheat (0.20 acre)	1000	1005	101
Mustard (0.20 acre)	1000	1025	103
Tomato (0.10 acre)	150	170	113
Goat Farming (5 + 1 model)	300	280	93
BYP (Desi Bird)	200	360	180
Tamarind	500	540	108
Social Capital Development			
Community Resources Persons trained in Sustainable agriculture/NTFP	80	80	100
Community Para Professionals/PashuSahiya promoted	20	20	100

### Success Story:

Name of the Beneficiary: **Binita Huni Purti**, Vill: Iti Srijan, Block: Bandgaon, Dist: West Singhbhum, SHG: April Baa Sowam Sahayata Samuh

Follower of Birsa Religion, **Binita's** family faced social boycott as due to poverty and hunger, she used to work and eat at houses beyond her religious community, which is considered against her religion. Her family of four members were thrown away from community and left alone with no support like house, land, assets, livestock etc.

MKSP intervene in her life in 2014. She was an active SHG member in village. She attended various trainings of livestock and finally selected Goatary. She had taken loan from SHG and purchased 5 goats. After one year she sold 5 goats and earn around Rs 12500. Remaining 10 goats have gradually increased her of house assets. Now she takes land on lease for paddy cultivation, had bought a land and built house. She has received Goatery shed as well from MGNREGA.

She had attended long duration trainings from SRPs in state. Now she provides services to community regarding vaccination and de-worming and charges Rs.5/per goats. She has also good communication with para vet service providers in block level who takes hers in other villages for providing services to livestock beneficiaries.

She takes care of Integrated Livestock Development Centre (ILDC) with other team members in her villages. 120 HHs are getting services from this ILDC timely. Vaccination camp is held regularly, there is a facility to measure their goats before selling it in market.



### (ii)Project Title: MGNREGA - NRLM Convergence CFT Strategy

1	Project Location and Intervention Area	Bandgaon (West Singhbhum), Murhu (Khunti), Mahuadanr (Latehar).
2	Theme/Issues	<ul style="list-style-type: none"> <li>Capacity building to community about MGNREGA as well as to improve income on farm land through its 100 days employment through MGNREGA.</li> <li>Asset creation for sustainable livelihood.</li> <li>Water conservation and Natural Resource Management.</li> </ul>



3	Project Duration	September, 2014 to Till Date
4	Referral Group	Labour Groups, SHG groups and SHG Women Federation, MGNREGA Help Line Centre, Barefoot Engineer, Selection Village Resource Person, Selection of SHG Mate, Block Co-ordination Committee, District coordination committee and so on.
5	Direct Beneficiaries	Labourers, Vulnerable groups of society.
6	Indirect Beneficiary	Block and Panchayat level stockholders, PRI members, Mates.
7	Support Agency	Ministry of Rural Development Department (MoRD).

### Activities Conducted

- Demand Generation.
- Support to worker for prepares a Job Card, account opening in Nationalize bank.
- Strengthening Rojgar Diwas, Gram Sabha.
- Block Coordination Committee as well as District Coordination Committee meeting.
- Selection of SHG Mates and provide training.
- Handholding support to SHG, SHG Mates, PRI members, Labour group.
- District & Block level workshop on GPDP.

### Impacts/Results

Quantitative	Qualitative
<ul style="list-style-type: none"> <li>• Total demand generation - Murhu - 2030, Bandgaon - 974, Mahuadanr - 1650</li> <li>• Total prepare Job Card - Murhu - 306, Bandgaon - 536, Mahuadanr - 312</li> <li>• Total trained Mates - Murhu - 441, Bandgaon- 229, Mahuadanr- 347</li> <li>• Total Registered Mates in - Murhu- 412, Bandgaon- 227, Mahuadanr - 295 MGNREGA MIS</li> <li>• Total beneficiary selection for MGNREGA :Murhu- 1632, Bandgaon- 2164, Mahuadanr- 1852</li> <li>• Total beneficiary selection - Murhu- 4 (4 Acr), Bandgaon- 5 (4.3 Acr.), Mahuadanr-22 (24.3 Acr.) for Mango Plantation</li> </ul>	<ul style="list-style-type: none"> <li>• Rojgar Diwas in all panchayat of Murhu block.</li> <li>• 100 % Bank Account saturate in Bandgaon block.</li> <li>• 95% Bank Account Coverage in Murhu block.</li> <li>• 90% Bank Account Coverage in Mahuadanr block.</li> <li>• Regularization of Gram Sabha meeting with increased women participation.</li> <li>• Assets creation and Increase in ownership.</li> <li>• Empowered Community about MGNREGA and to take decision own self and stared the demand for work.</li> <li>• SHG mates deployed in the schemes.</li> <li>• Pit digging has been completed.</li> <li>• Selection of beneficiary for mango plantation has been completed in all the three blocks.</li> <li>• Selection of beneficiary for Vermi/Nadep compost pit has been completed in all the three blocks.</li> <li>• Monthly meeting with trained mates and PRI members for Handholding support on their roles and responsibility.</li> <li>• Help to worker for bank account freezing and new account opening in Nationalize bank.</li> <li>• Orientation on GPDP to PRI members, Mukhiya and GRS has been completed in all the three blocks.facilitated by LEADS Master trainer. During GPDP handholding support to the planning team</li> </ul>



### Success Story

Manorama Tiru, (a resident of the village of Kunjala panchayat, Murhu block of Khunti district, Jharkhand), has now been recognized as a progressive farmer. Earlier her family was going through a terrible financial crisis.



Manorama Tiru's life has completely changed ever since she adopted for the mango plantation schemes under the Mahatma Gandhi National Rural Employment Guarantee Act (MGNREGA). Most of the land these families possessed was barren, and infertile. Initially, she was reluctant to take up mango plantation under MGNREGA as she was unable to figure out the potential risks and uncertainties, which gave out nothing earlier, turned into a gold mine which fetched her Rs 68, 000.

A protected environment with assured irrigation cover gave her the strength to take up farming inside a plantation area. As part of the convergence initiative, a drip irrigation system was also installed on her field to ensure precision farming. She had received this system on subsidy from the concerned department.

Manorama Tiru has now become a role model for many other women in her village. She has not only maintained a beautiful orchard in 3 acres of land, but is also doing round-the-year commercial farming inside the patch. Her family earns Rs 39,800 from vegetable cultivation inside the orchard in addition to Rs 16,800 under the MGNREGA, working for 100 days on the horticulture site. She and her family are surely on a path of prosperity as within three years they will earn handsomely from the orchard as well as from the farming activities.

Her achievements have not only brought accolades, but also created hope among thousands of other women in the state

The Birsa Munda Aam Bagwaani scheme under the MGNREGA has been giving hope to many over the last three years in Jharkhand. Horticulture with inter-cropping being a set and established prototype in some of the impoverished pockets of the state has now been adopted for large scale implementation.

Civil society organizations and the Rural Development Department have joined hands to promote large-scale implementation of mango plantation as part of poverty reduction strategy in rural areas.



### (iii)Project Title: Entitlement Realization of Marginalized Community through Empowerment

1	<b>Project Intervention Area</b>	20 Villages of Bandgaon Block of West Singh District, Jharkhand
2	<b>Theme/Issues</b>	"Empowering Tribal / Marginalized Community for entitlements realization and food security in referral areas"
3	<b>Project Duration</b>	Jan. 2018 to Dec. 2018

4	<b>Referral Group</b>	SHG, Gram Sabha ,social leaders, VHSNC, SMC, and farmers club
5	<b>Direct Beneficiaries</b>	Farmers, SHG members, social leaders, PRI members, Gram Pradhan, VHSNC, SMC and farmers club
6	<b>Support Agency</b>	Andheri Hilfe Bonn

### Major Achievements

- 4 days residential training for 35 participants on Natural farming, Organic fertiliser, pesticide, Housing, fooding, disease management in Livestock, collective marketing of Tamarind, Lac, Jackfruit etc.
- An exposure visit to progressive farmers.
- ILDC has been established in Kopa village of Bandgaon block, having a big size room for ILDC and a place in back yard for vaccination camp where beneficiaries bring their goats for vaccination and de worming in a month. Animal husbandry doctor from block has been introduced in this village who provides regular services to community and charge @5/Goat and @10/cattle for vaccination.
- It's a community operated centre with the help of Durgi Hassa who is trained for primary level of disease management through herbal medicine like FMD, Skin disease, gas in stomach etc.
- 650 goats, 390 sheep and 468 cattle have been vaccinated to control PPR disease through ILDC in December2018.
- Total 4 seminars had been organized at Panchayat level on convergence program resulting in 10 Beneficiaries of Mango Plantation receive 1HP motor pump set and 500 meter pipe each for irrigation by Soil conservation department, West Singhbhum district through convergence program.
- 16 Gram Sabha has reformed standing committee of eight members in 16 villages.
- 04 schools are doing their regular SMC meetings in their schools and also students retention and teachers regularity in schools.
- 12 VHSNC committee has been formed in 12 villages who are doing their role actively in villages.
- 14 Anganwadi workers are providing all services in their respective Anganwadi centre in villages.
- 02 seminars of different government officials was organized in Tebo and Champawa panchayats resulting in MGNREGA Integrated Watershed Planning in one village in every panchayat of Bandgaon block. Soil conservation department has provided Staggered contour trenches to decrease surface water run-off by 80%.

### Success Story

Village Kopa of Bandgaon block is surrounded by thick forest. The community is fully Tribal with majority of Munda Tribe. People of these areas depend on daily wages, selling of fire wood, selling seasonal forest produces and migration in off season.

**Sanika Hassa** lives in this village with his wife and children. Earlier, he used to go out in search of daily wages. Andheri



team attends Gram sabha and SHG meetings regularly in this village. AHB team has found that Sanika has 30 goats, 25 BYP (Desi Bird) and a small piece of land for vegetable cultivation. The team has discussed with him regarding livestock rearing and also showed him the way how he can earn money from livestock. The idea touched him.

Now he has started taking care of goats and BYP. Prepared proper housing management where team has helped him to make goat shelter with proper ventilator. He takes care of fodder in house and also during open grazing. Earlier wild animals used to take away goat kid or poultry or goats or poultry used to die due to viral disease.

AHB team established Integrated Livestock Development Centre (ILDC) in his campus. Para vet provides regular service like timely vaccination to control PPR disease, Lasota, and de worming. They prepare herbal medicine for FMD, skin disease, gas in stomach etc. All this takes place in guidance of vet nary doctor.

As a result of proper care, the number of Goats and poultry has increased. Sanika has sold 4 Goats in this year and earned Rs. 24000/- He has sold 5 poultry @350 and earned Rs.1750/-. ILDC has provided him some facilities like: measurement of Goats and Rate fixation, signboard on Roads, banners in public places, market. The buyer came to his house and took goats at proper rate. He has started cultivating seasonal vegetables for self consumption. This year his son Albert Hassa financed from Bank and bought Auto Rickshaw. His daughter Durgi Hassa became staff of AHB. Sanika has provided a place in back yard where vaccination camp takes place. Sanika is busy in his livestock rearing and also in farming sector. He has also sold some Tamarind, Lac collectively in market which helped him to provide a better life to his family.

He has become role model in Kopa village. Now he also provides services to community in herbal medicine for FMD, Skin disease, Gas in stomach, Chechak, proper housing management, food and convergence with MGNREGA for shelter.

***(iv)Project Title: Rural Empowerment for Entitlement Realization***

1	Project Location and Intervention Area	Chandwa, Latehar
2	Theme/Issues	Education, Livelihood, Agriculture, Gram Sabha, SHG
3	Project Duration	July 2017 to June 2020
4	Referral Group	STs, SCs, Women, SHG, Farmers, Children, Villagers etc
5	Direct Beneficiaries	21585 marginalised people, mostly Adivasis and Dalits living in 10 selected villages
6	No of Indirect Beneficiary	This includes the other members of the 10 villages, Adivasis and Dalits from neighboring communities as well as officials of local authorities
7	Support Agency	BFdW, Germany

**Activities Conducted**

Gram Sabha meeting for community mobilization, SHG and SMC meeting , Workshop for Task orientation of Social Leaders, Training of Gram Pradhan, Interface meet with Govt officials on Schemes, Block Watch Committee meeting, Linkage Seminar for MGNREGA, Food & Social Security, Bank Support, JSLPS Support, MGNREGA convergence meet, Linkages meeting, Training program of SMC members on Right to Education Act 2009 and SDP, Training of Model Farmers ( Male & Female) on farm and non farm activities for food security and income

### Success Story

**Beneficiary- Jhano Oraon**

**Husband- Suresh Oraon**

**Village- Serak**

**Panchayat- Serak**

**Block- Chandwa**

**Dist-Latehar**



Jhano Oraon w/o Suresh Oraon from the village Serak has earned as much as Rs. 40000/- by selling the Ducks. This has also motivated many people around her to follow her footsteps. General perception is that the ducks clean the dirt from the area and cure many other diseases. Also the tribal population eats its meat which helps in preventing the children from malnutrition. Now she is the role model for the others in the village. Jhano Oraon makes this profession for her livelihood and whatever she earns from duck she used in education of their children, clothes and in household activities. Now villagers after seeing her want to make this as a profession because earlier she was a Labor in MGNREGA and faced many difficulties for the livelihood. Now she can fulfill all the basic necessity by her new professions. Some of the SHGs are also trying to do this type of small entrepreneur which earlier they were neglecting. LEADS has introduced this type of entrepreneur idea and the community really thanks all the member of LEADS for enhancing their income.

generation, support to model farmers with good seed & information and promotion of WSHGs focusing Ultra Poor (5 SHGs)

### Impacts/Results

- Some of the SHGs linked with Banks and JSLPS
- 100 model farmers ( Male & Female) are trained on farm and non-farm activities for food security and Income Generation
- In Each village we have selected 3 male and 3 female social leaders and provided capacity building to help the villagers in their development.
- Through training empowered the traditional Gram Pradhan about their roles and responsibilities.
- Social leaders is one of the core components of project for disseminating information related to project deliverables in the community. The social leaders are now vocal and actively participating in social activities.
- The training of farmers helped them as they know the different techniques like holistic approach, vegetables cultivation, SRI, animal husbandry, Annapurna model, 36x36 model and also know the methods of making organic pesticides which help them to increase their production and now they the selected farmers are doing by their own.
- After Training of SMCs members now they are regularly having discussion on the issues related to school and now SDPs are formed with the help of all selected members, and also giving priority to the work which is most needed.



**(v)Project Title: Community Engagement for Sustainable Development and Financial Inclusion of the Ultra Poor**

1	Project Location and Intervention Area	District (Ramgarh & Hazaribag) Block (Mandu, Dadi & Churchu)
2	Theme/Issues	Help people in extreme poverty and vulnerability to advance their economic and social well-being.
3	Project Duration	16-19
4	Referral Group	Ultra poor & Very poor
5	Direct Beneficiaries	Ultra poor women
6	No of Indirect Beneficiary	1000
7	Support Agency	Trickle Up

**Activities Conducted:**

PRA, PAT, Bank a/c Opening, Livelihood Selection, Baseline, Training on Financial literacy, Training on SHG Strengthening & Mobilization, Training on Social Security Schemes, Training on Livestock Management, Training on Agriculture, Convergence & Bank camps

**Impacts/Results:**

- Total number of SHG reached -270
- Total number of participants reached under Ultra Poor & Very Poor category - 4072.
- 1000 UP PPs started Diversified livelihood
- 1000 UP PPs have individual bank account and access to bank.
- 3072 VP PPs have bank account and are linked with one Govt. insurance (PMSBY) scheme
- 100% of women participation in SHG.
- Two villages undertaken by KVK who will be provided agricultural support till 2022.
- 1000 UP PPs are linked with Ayushman Bharat Yojana.
- 550 UP PPs linked with PMSBY insurance scheme.
- Practicing organic farming and the introduction of organic pesticides, insecticides and manure to ensure a nutritious diet and good health
- Motivated parents to spend some part of their income on their children education.
- Five UP PPs opened small shop after project intervention
- 440 UP PPs benefited under convergence activity (agricultural seeds and fruit plants was provided from KVK & ATMA)
- Organized two major bank camps at village level with Ramgarh lead bank, NABARD & block.

## Success Story

### AGAINST ALL THE ODDS

The story of **Pratima Devi** from Bhuyandih village is an inspiration for all of us. Where a normal person would have broken by the odds in his/her life, Pratima Devi kept fighting against all the odds. Including her, there are five family members. Before the project intervention, her husband was only working member of the family. Pratima Devi's engagement was only seen in agriculture wage work during Kharif season. Rest of the time she spent at her home depending on her husband's income. Sometimes there was argument among the husband-wife due to monetary issues, wage and availing situation. Since the family condition was deteriorating, her husband migrated to another state for work. The situation was quite challenging for both husband and wife.

After few months Pratima's husband started sending money. The money was not enough to solve their problem, but it was just enough for Pratima to support her family. After project intervention, she got linked with an SHG from where she received training on varied trade and learned about saving. She deposited 10/- Rs in SHG which she took from the money sent by her husband. After getting training on agriculture she took money from SHG to purchase seed and started with it.

The first cultivation was successful enough to provide the vegetables. Initially, it saved their market expense, now she had more money to save. She was happy that she can provide 3 time meal to her family in absence of her husband. After getting training on livestock management she purchased two goats which were successfully raised and sold at 25000/- Rs.

As there is no shop in the village people have to travel 5km to get the confectionary items. After consulting with family members and husband she planned to open a shop in the village. Though Pratima expressed her dream of the opening of the shop, but from within she was quite nervous and confused as it was a quite big step for her which also involved risk. Avoiding every negative thought, she opened the shop with her husband and now the shop is running quite successfully. People in the village come to Pratima's shop to buy things.

Now she is saving money for her children future and when asked about their schools, she is motivating them to be educated and become a more successful person than her.

(vi)Project Title: *Bal Sashaktikaran Abhiyan- Ensuring Nutrition and Education Rights of children (0-14 years)*

#### A. Project Summary

1	Project Location and Intervention Area	60 villages in 6 Panchayats of Bandgaon block of West Singhbhum district.
2	Theme/Issues	Education
3	Project Duration	April 2018 to March 2019
4	Referral Group	<ul style="list-style-type: none"><li>• 0-14 Year children</li><li>• Adolescent children</li><li>• Mata Samiti members</li><li>• Anganwadi workers</li></ul>



		<ul style="list-style-type: none"> <li>• School Management Committee members</li> <li>• Teachers</li> <li>• Parents</li> <li>• PRI members</li> <li>• Local traditional leaders</li> </ul>
5	Direct Beneficiaries	9560 (8188 children + 1372 SMC & Mata Samiti)
6	No of Indirect Beneficiary	22541
7	Support Agency	India Literacy Project (ILP)

### Activities Conducted:

#### Pre-School Interventions

- Training of New AW workers on Pre-schooling teaching methodologies.
- Distribution of Play and Learning materials to intervention new AWCs
- Capacity building of AW workers and Helpers on Food Safety and Hygiene during their monthly meetings.
- IEC developed on Food Safety and Hygiene in AWCs.

#### School Level Interventions

- Learning Level assessment in intervention schools.
- Library support in 10 intervention schools.
- Village level workshop with SMC and Community on School development and Planning.
- Para teacher support in 06 difficult schools
- Enrolment and retention campaign
- Child centred events at panchayat level
- Play Materials support to intervention new schools
- Training to adolescent groups (16 old + 4 New) on Life skill development
- Supported in the implementation of Career Guidance program in 05 high schools

### Impacts/Results

- Capacity building of AW workers on Food Safety and Hygiene covered 76 AW workers of intervention and non-intervention villages.
- Training and capacity building of AW workers on Pre-schooling methodologies has resulted in regular Pre-schooling activities in more than 80% of the intervention AW centres.
- 34 intervention AWCs with no building or incomplete building were identified and listed by block for construction.
- Project team has facilitated in the enrolment of 52 children to schools, including 20 dropouts.
- Orientation of adolescents was done in 20 schools of Bandgaon block on issues of Childs rights and protection, Health and Nutrition, Hygiene and Sanitation and covered 635 students.

- Career Guidance sessions were conducted in 5 high Schools covering 2 intervention and 3 non-intervention schools. The sessions covered 584 students including 456 girl students.
- LEADS is included in the district resource team for SMC training.

### Success Story

Bangurkel village comes under Sinduribera panchayat of Bandgaon block. Since the intervention of LEADS under ILP supported project the awareness of SMC members as well as community towards education has improved a lot. The teachers are also very supportive and both the SMC and teachers are working in coordination with each other.



The school does not have a boundary wall and due to absence of boundary wall, the students tend to skip outside the school during class timings. Ensuring the regularity of students was an issue with the teachers and it was a regular agenda of discussion in the SMC-parents meetings. The SMC and teachers have demanded for boundary wall from the department but it was not sanctioned. So as a remedial arrangement, the SMC members and teachers had decided to do temporary fencing using bamboo and bushes. The bamboo was donated from the community and the fencing work was done with community contribution. The effort has resulted in improved retention of students in the school.

### (vii)Project Title: Reducing Inequality in India

1	Project Location and Intervention Area	15 villages in 3 Panchayats of Murhu block of Khunti district.
2	Theme/Issues	Education
3	Project Duration	Feb 2018 to Jan 2019
4	Referral Group	<ul style="list-style-type: none"> <li>• Children of 6-14 age group</li> <li>• School Management Committee members</li> <li>• Teachers</li> <li>• Parents</li> <li>• PRI members</li> <li>• Adolescents &amp; Youth</li> </ul>
5	Direct Beneficiaries	6228
6	No of Indirect Beneficiary	22323
7	Support Agency	OIN (OXFAM India)

### Activities Conducted

- State level workshop on education inequality in Jharkhand
- Report on education inequality in Jharkhand was prepared and released
- Capacity-building workshops for parents and civil societies on equitable quality pre-primary education (ECE) and elementary education
- School development Plan formulation

- Capacity building workshops for SMC and mothers group members on “Community assessment of School & AW centre”.
- Block level consultation on education with stakeholders
- State level network meeting on Education Inequality
- Engagement with women, mothers, Frontline workers on the importance of ECCE
- Workshops with community and SMC members on RTE and quality education
- Child tracking in the project areas

### **Impacts/ Results**

- In 2018, when the project was initiated in 15 schools of Murhu, the SMC members were inactive. Regular capacity building through meetings, trainings and workshops has enhanced their understanding on RTE provisions and on their roles and responsibilities. Some initiatives were also taken by SMC which has resulted in improvement in infrastructural facilities like construction of boundary wall at Ghaghra, installation of Hand washing units at Perka and Bajigama, Solar powered water tank units at Perka and Oskeya, Completion of incomplete school building of Darla.
- SMC meetings have become regular in 08 intervention schools. The intervention schools have School development plan in place which was jointly prepared by SMC, teachers and Bal Sansad members under the facilitation of project staff.
- Bal Sansad groups in the intervention schools are strengthened and their meetings are regularized. The Bal Sansad groups in intervention middle schools are preparing their action plan and working as per it. Child tracking is also initiated through Bal Sansad involvement in 03 intervention middle schools.
- Intervention with Mothers Group has resulted in regular Pre-schooling in 09 intervention AWCs.
- Jharkhand State Education Inequality Report was prepared and released.
- Teacher, Bal Sansad Member & SMC members felicitated in state level meeting

### Success Stories

Ghaghra village comes under Ganaloya panchayat of Murhu block. It is situated around 15 kilometres from block headquarter Murhu. The village has a mix population and tribal majority. The community is primarily engaged in agriculture and petty business as their source of income generation. Apart from agricultural work, people also engage in labour work and some even migrate to other states as labourers during non-agricultural seasons. There is a middle school in Ghaghra village. The enrolment in Upgraded middle School Ghaghra is 84 with 45 Boys and 39 Girls. There are three teachers in this middle school, two of which are Para. The SMC is also in place and is formed as per RTE act.

LEADS with the support of Oxfam started intervention in Ghaghra in 2018. At that time, SMC meetings were not regular and the members were not much interested in school matters. Organizing meetings and trainings of SMC members succeeded in motivating some of them including the SMC president.

The school does not have a boundary wall although it is situated on the road side. Earlier the teachers have demanded for boundary construction from their department but nothing happened. SMC president, Birendar Pradhan decided to do something in this regard. He visited block office and the BEEO suggested him to meet DSE. He went to the DSE office at Khunti but the meeting also did not fetch any result. Birendar discussed the matter with the *Mukhiya* of Ganaloya panchayat, Hanna Dodrai. During a visit of DC and BDO to Ganaloya, Birendar shared the need of school boundary with DC. The DC immediately instructed the BDO to look into the matter. Within a week, the Boundary wall construction was sanctioned from block. The Teachers and the *Balsansad* members are now planning to develop “Nutrition Garden” in the school premises once the boundary work is complete.



(viii)Project Title: “An Initiative of Transparent and Accountable Governance System in Jharkhand”

1	Project Location	Torpa block of Khunti District
2	Intervention Area	Block - Torpa District - Khunti No. of villages intervention villages - 50 No. of scale up villages - 45
3	Theme/Issues	To contribute to social inclusion and reduced poverty through improved public services and programmes. Specific -

		<p>1. Improved quality, coverage and access to information regarding public services in education, health and nutrition and rural employment.</p> <p>2. Innovative processes and best practices that address key constraints in information delivery, service provision and empowerment of self- governance bodies are successfully standardized and replicated by state and district-level authorities or service providers.</p>
4	Project Duration	2013 - 2018 (60 months)
6	Referral Group	<p><b>Service providers -</b></p> <ul style="list-style-type: none"> <li>• Teachers and headmasters of schools.</li> <li>• Health Activist (ASHAs)</li> <li>• Auxiliary Nurse and Midwives (ANM) of Health Sub centres.</li> <li>• Staffs of 1 Referral Hospital.</li> <li>• 38 Intervention and 30 scale up Centres of the Integrated Child Development Services (ICDS) and staffs of the department.</li> <li>• Rojgar Sevak, Panchayat Sevak</li> </ul> <p><b>Self - governance bodies-</b></p> <ul style="list-style-type: none"> <li>• PRI Members and standing committee of Gram Sabha</li> <li>• School Management Committee (SMCs)</li> <li>• SMC Federation</li> <li>• Village Health Sanitation and Nutrition Committees.</li> <li>• Women Self Help Group (WSGH)/CBOs</li> </ul>
7	Direct Beneficiaries	24489
8	No of Indirect Beneficiary	93705
9	Support Agency	Welthungerhilfe & European Union

## Activities Conducted

### State Level Programs

- State level SDP formulation campaign conducted for the purpose to generate a system for fulfilling the drawbacks within school premises.
- Organized Jan Shiksha Samvad on School Development Plan & Role of School Management Committee
- Organized sharing program of “Citizen Report Card” covering seven themes of social issues
- Organized an exposure visit of European Union partners at project intervention area
- People centric Advocacy through RTE Forum

### **Strengthen the Education System: Community Mobilization**

- District level Jan Shiksha Samvad conducted in Khunti district to provide a platform to discuss and share achievement and also problem which became hurdles in the path of quality education in the district.
- Training of SMC members on Realization of RTE Act 2009, their role and responsibilities & School Development Plan
- Participatory planning and formulation of SDP & its submission to Block officials
- Facilitating Education Department to integrate this process at Block and District level to have more impact of this plan on performance of the schools and thereby ensuring quality education
- SMCs are working as a cadre of monitoring to check the overall grievances of government schools
- 36 schools are conducting their own SMC meetings & presenting their demands in Gram Sabha.
- SMC members of 50 schools are monitoring their rights & entitlements mentioned under the RTE Act through a “Pictorial Monitoring Chart”

### **Ensure Health & Nutrition among Women and Children**

- Training of Village Health Sanitation and Nutrition Committee (VHSNC) on their role and responsibilities, preparing Village Health Action Plan and use of Untied Fund to improve health related services in intervention villages.
- Training of ICDS workers and ASHA on their assigned services, food diversity and Nutrition, Growth Monitoring Chart, Neo Natal care, pre and post natal care sensitized them to perform confidently in the intervened centres.
- PLA meeting based conducted to sensitized WSHG women on maternal and child health issues in the intervened villages.
- Increase in number of registration of pregnant women in AWC which reveals their inclination towards institutional delivery.

### **Ensuring Participatory planning process - MGNREGA**

- Active Participation at village level gram sabha meeting to make plan with participation of community to implement MGNREGA at grass root level in the intervention villages.
- Ensuring more demand of work, more job card preparation and minimize delay payment of MGNREGA job card holder.
- Training of Rojgar Sevak, Panchayat Sevak and Meth on their defined activity created a positive working environment at field level.

### **Capacity Building of Stakeholders**

- Formation of SMC Federation and its regularize its quarterly meeting
- Exposure visits of SMC / Bal Sansad members
- Organized Bal Samagam to strengthen the capacity of student
- Block interface meeting with stakeholder on education, employment, health & nutrition
- Panchayat level Information fair & Public campaigns
- Training of PRI members on budget tracking focusing on 14 Finance Commission



- Training of government school teachers on provisions of RTE Act 2009, State Rule and SDP.
- Training of Trainers (ToT) on RTE Act 2009 and role of SDP.
- Capacity building of partner organization on 'Social Audit, Budget & Progress Tracking'
- Capacity building of Education, Health and PRI Department on RTI and Accountability Tools.
- Capacity Building VHSNC on performance Monitoring of ICDS, VHND and Health Centres Related Services Through Pictorial Service Assessment Tool

#### **Exposure Programs**

- Exposure program organized for stakeholders from community to different places to have a look on the best practices on education, livelihood, farming, women empowerment, health & nutrition
- Partners of European Union in India had visited the project intervention area to have an understanding of intervention process and impacts occurs in the project of 'Good Governance'

#### **IEC, Visuals, Documentation & Campaigns**

- Develop 70 wall news papers with the help of community members and Bal Sansad members, promoting the local news of village and promoting Bal Sansad as a Bal Patrakar.
- Conducted 'Annual Information fair' at Block level with an objective of information dissemination to large mass. Information on various government schemes and forms got filled up on the spot by the beneficiaries
- Organized Ratri Choupal at Panchayat level to cover out the social issues and create mass awareness
- Conducted Public campaign using street plays designed thematically highlighting major issues on health, education and employment to disseminate key message, improve approach of communities.

#### **Achievements**

Quantitatively	Qualitatively
<ul style="list-style-type: none"> <li>• Reached out to about 19969 (directly) targeted population through regular community meetings</li> <li>• 110 School Development Plan (SDP) prepared with the help of AKVO Flow and the analysis report has been shared with district officials, Khunti.</li> <li>• 36 schools are conducting their own SMC meetings &amp; presenting their demands in Gram Sabha</li> <li>• 146 out of school children identified and enrolled in Vidyalaya Chalo Chale Abhiyan</li> <li>• 10 VHSNC prepared their Village Health</li> </ul>	<ul style="list-style-type: none"> <li>• 12 New AWCs constructed with all basic infrastructure through regular advocacy for tribal children in the intervention area.</li> <li>• Women participation increased in Gram Sabha meeting</li> <li>• Assessed the 'Government Service Delivery' which revealed increase in both Education &amp; Health services</li> <li>• Regular participation insured by SMC members, PLA and VHSNC meetings</li> <li>• Gram Sabha's were strengthen and were capacitated to take decisions</li> <li>• Participated in appointment of teachers</li> </ul>

<p>Action Plan and submit it to block officials</p> <ul style="list-style-type: none"> <li>• Regular PLA meeting on maternal and child health and nutrition conducted in 25 villages</li> <li>• 38 VHSNC monitoring VHND through Pictorial Monitoring Tool.</li> <li>• There is regular Gram Sabha Meeting in 36 villages.</li> <li>• Narrow Casting of Community Radio has been rolled out in 4 phases and cover 40 villages in Torpa and 120 villages under the project partner's area. LEADS provide the technical support to implement this program to project partners</li> </ul>	<p>in schools and</p> <ul style="list-style-type: none"> <li>• Increase in number of registration of pregnant women in AWC which reveals their inclination towards institutional delivery.</li> <li>• Increase in number of beneficiary on Village Health and Nutrition Day.</li> <li>• Bal Samagam conducted to recognise hidden talent in children and promote them.</li> </ul>
--	---

### Success Story

#### Steps taken by VHSNC for Demanding new AWC.

A village Roro, Panchayat- Okra, Block-Torpa, Dist.-Khunti had 1436 population, having 746 male and 690 female, 147 household. In 147 household there were 22 children between 0-3 and 43 children between the age group of 3-6 year. There were 12 pregnant women and 17 lactic women in the village.

In the present situation there are no AWC and their village catchment AWC is 3km far from the village. In that case the beneficiary had not reached for availed benefit from the AWC like immunization, THR, Pre School etc. Beneficiary went for private center for immunization or don't immunized on their schedule time. Children and Women don't purchased nutrient food for their good health due to poverty.

In the Roro village VHSNC members conduct their monthly meeting regularly and discuss on health, hygiene and nutrition and plan to demanding AWC for insuring health, hygiene and nutrition issue for the beneficiary and give responsibility to 5 people for survey and prepare the list of beneficiary. Survey completed by those person and they submitted their report to VHSNC members and they again call a meeting and prepare a application for demanding AWC to Ms Purnima Sinha, CDPO, Torpa and also they decide a place for new AWC which is donated by a villager.

Then all VHSNC members went and met with CDPO and also update with their present scenario of the village. The demand a new center in their village and also gave their application in front of Ms Roushni Gudia Pramukh, Panchayat samiti. CDPO mam ensure to provide new center but on temporary basis she told one of them to start preschool with 3-6 year children we provide some money for that and also she talk with the ANM for camp every month for immunization.



**(ix)Project Title: Water Sanitation and Hygiene in Schools (WINS)**

1	Project Location and Intervention Area	Ranchi and Lohardaga
2	Theme/Issues	Driving sanitation through WASH in School/Anganwadi interventions in Ranchi, and Lohardaga district of Jharkhand
3	Project Duration	12 months (14 <sup>st</sup> February 2019- 13 February 2020)
4	Referral Group	BAL SANSAD, Teachers, SMC, PRIs, Parents
5	Direct Beneficiaries	400 Schools & 400 AWC
6	Indirect Beneficiary	PRIs and Community
7	Support Agency	Unicef

**Activities Conducted**

MHM Training of 12 KGBV across 12 Blocks of 2 districts, Peer learning groups on MHM created in all KGBVs, Display of 39 indicators of SVP and IEC/WALL Writing on School Swachhta, Teachers/BRP/CRP/SMC/PRIs conference on component of 39 indicators of SVP across 400 Schools / Anganwadis in twelve Blocks, District workshop on school SWachhta Plan -4 (Two in each district), Prabhat ferry and awareness drive in Schools, Global Hand washing Day, MHM Day, Swachhta Diwas.

**Impacts/Results**

- Capacity building of SMC members, Bal Sansad, Teachers and PRIs will help in sensitizing more than 1000 schools across 2 districts on 39 indicators set for star categories. Finally bringing 400 schools to 3 to 4 star categories in the two districts.
- 27000 children are aware about importance of health and hygiene practices in 400 schools. Orientation of Bal sansad and discussion on sanitation during school assembly and through other school activities will also lead to status of improved sanitation in their surroundings as they will play a role of sanitation agent in community. All KGBVs in 12 blocks and 800 girls of KGBVs oriented on MHM and peer group developed in all such schools.

## Success Story

### PAD BANK - Rising tide in school

Sushanti, Class 8 student, Kasturba middle school, Lohardaga

*“Menstruation cycle is a relief now with the availability of sanitary napkins, we also have pad bank in our school along with incinerator”*

*“I wish that more and more girls get accurate information about menstruation hygiene management so that we can study more, play more and explore our full potential in school”*



Sushanti Kumari is a 15 year old girl who is very active in school. She is native of jamhare village, Hisri panchayat and student of Kasturba Middle School Lohardaga. Sushanti is one of those girls who has been socially active and concerned about others. She has lots of friends and probably her candid nature and ability to express herself has made her confident and popular girl in her school with also a active minister in school cabinets “BAL Sansad”.

She actively participates in all school activities and advocates issues in her school that her fellow mates face. After attending the workshop on MHM in her school she got lots of information on menstruation and learnt how health and hygiene go hand - in - hand. She realised that there were many girls (her friends) in her class as well as in her school who do not attaining classes during her periods. Lack of information coupled with inadequate facilities keep them away from school. She discussed these issues in her cabinets meeting along with teachers and principal and urged them to do something so that girls do not miss their classes during periods.

*“Girls in the school remained absent for 5 to 7 days in the school due to lack of proper sanitation facilities like sanitary pads, and this hinders their mobility”*

Sushanti along with the support and encouragement of school, peers, teachers and principal started talking about menstruation to help girls one and on the other with started pad bank to help girls with sanitary napkins during periods. Girls deposit pads on their birthday and the response has been tremendous. We use incinerator to dispose our used pads. We have all necessary facilities in place and we also receive information regularly from time to time this has helped in increasing the attendance of my class, now the attendance is more consistent than before.

### (x) ‘Non - Conventional Training Skill for Girls’

1	Project Location	Ranchi
2	Intervention Area	District - Ranchi Project focus to implement its activities mainly in urban slum.
3	Theme/Issues	Strengthen Beti Bachao Beti Padhao program for changing gender narratives and norms and for promoting skills and jobs in non-traditional occupations for girls and young women. Trade provided for skill promotion and income generation for girls -

		<ol style="list-style-type: none"> <li>1. Scooty repairing</li> <li>2. Book Binding And Photo Framing</li> <li>3. Solar Assembling</li> <li>4. Furniture Polishing And Interior Designing</li> <li>5. Electrical and Cookwar Repairing</li> </ol>
4	Project Duration	2018 - 2020 (36 months)
6	Referral Group	<b>Service providers -</b> <ul style="list-style-type: none"> <li>• Entrepreneurs of concern trade on which girls are trained.</li> <li>• Small scale enterprises.</li> </ul>
7	Direct Beneficiaries	<ul style="list-style-type: none"> <li>• 156 Girls trained under this project.</li> <li>• 68% of trained girls placed.</li> </ul>
8	No of Indirect Beneficiary	
9	Support Agency	Girls Count

### Activities Conducted

**State Level Programs** to disseminate the objective of the project and interact with different entrepreneurs to take their suggestions to implement the project activities which had been more fruitful for trainees. The project aims of ensuring equal participation and income generation through providing skill training for girls.

**Capacity Building** of trainees was done on different skill along with training on different non - conventional skill training.

**Exposure Programs** was organized under the project at Swastik Auto Agency servicing centre, Ranchi and Manoj Furniture and some other business associate to enable the participants from a different setting to interact with and learn from each other, allowing them to view practical/real life situations of successful integration of sustainable practices in the said field.

**Under IEC, Visuals, Documentation & Campaigns**, developed IEC material on non-conventional skill promotion of girls. We also conducted campaign using role plays designed thematically highlighting major issues on employment for girls, need of source of income for girls/women and gender.

### Achievements

#### Quantitatively

- 156 girls trained on five trades as per given guidelines under project activities.
- 68% of trained girls placed in different organization

## State level programs held by LEADS

- ✓ State Level Workshop for Stakeholders on 'Non - Conventional Training Skill for Girls



**Support Agency :Girls Count  
Program Objective**

*To disseminate the objective of the project and interact with different entrepreneurs to take their suggestions to implement the project activities which had been more fruitful for trainees. The project aims of ensuring equal participation and income generation through providing skill training for girls.*

**Activity Date & Venue**  
**18 January 2019, Hotel Le Lac Ranchi**

- ✓ Capacity Building Programme for Elected Women Representatives of Panchayati Raj



**Support Agency :**

Ministry of Women & Child Development  
National Institute of Public Co operation & Child Development  
World Vision

**Activity Date & Venue :**

14-16 January 2019, LEADS Resource Center,  
Perka, Murhu, Khunti

## Amplifying Voluntary Sector in Changing Contours of Participation and Policy



**Support Agency :**  
**VANI, CES**

**Activity Date & Venue**  
**27 April 2019**



## SDGs State Level Workshop

	<p>Organised by : EU, WHH, Jharkhand SDG Mission, PRAVAH &amp; LEADS</p> <p>Activity Date &amp; Venue : 25 September 2018, Hotel AN Grand</p>
---	---

## State Consultation on New Education Policy 2019 and Quality Education

	<p>Support Agency : JRTEF, LEADS</p> <p>Activity Date &amp; Venue : 25 September 2018, Hotel AN Grand</p>
--	---

## State Level Workshop on Role of SMC in Ensuring Quality Education

Organised by: LEADS & JRTEF  
Activity Date & Venue: 24 September 2018, Hotel AVN Grand

## *State Level Research Undertaken/Report Published*

### Inequality in Education: Jharkhand

LEADS prepared a report under the larger banner of JRTEF. The report was prepared for Oxfam India. The report on status of Inequality in Education in Jharkhand focuses on the diverse dimensions of inequalities that have emerged through structured study of reports of the education department and field studies.

The report also draw attention towards need of policy amendments and also suggests systemic monitoring and supervision of existing educational infrastructures through which education is imparted and highlights other key issues that results to inequality in education.

## 5.GOVERNANCE OF LEADS

### LEADS Policies & Guidelines

LEADS believes in participatory approach of work and it is followed by organization, starting from community to organizational level. We go through community based micro plan for planning and development of the village in each of its programme. Within the organization, we have monthly staff meeting in which we take all the functional decisions. Core team has been constituted to take day to day functional and assets related decisions. LEADS is governed by the manuals and policies like:



### Board Meetings and Attendants

As per the By-Laws of LEADS, annually two Board Meetings are mandatory, but extra number of meetings can be organized considering the needs of the organization. In the year 2018-19, we have organized 2 Boards Meeting in which the participation of the board members has been more than 100%.

### Benefits taken by Board Members

There are seven board members of LEADS. Managing Trustee is also the full time Director of LEADS, so his honorarium has been passed by the Board along with Mr. Mahendra Kumar, (Senior Program Manager), another board member who also has full time engagements in LEADS. Paid amount has been reflected in the board meeting sheet for greater transparency.

## Declaration of Engagements of Relatives of Board Members

No such person has been engaged as an employee who is the blood relative of the board members of LEADS.

## Profile of Board Members

Mr. Anil Kumar Singh President	<ul style="list-style-type: none"> <li>•Post Graduate in Regional Development, JNU</li> <li>•(Profession- Social Service), Founder Member VANI, WNTA</li> <li>•Member since-28/07/2011</li> </ul>
Mr. Awadh Kishore Singh Managing Trustee & Director	<ul style="list-style-type: none"> <li>•Post Graduate in Rural Development, XISS</li> <li>•(Profession- Social Service)</li> <li>•Member since 14/12/2005</li> </ul>
Mr. Mahendra Kumar Treasurer	<ul style="list-style-type: none"> <li>•Post Graduate in Rural Development, XISS</li> <li>•(Profession- Social Service)</li> <li>•Member since 14/12/2005</li> </ul>
Ms. Nauri Nag Member	<ul style="list-style-type: none"> <li>•Post Graduate in Mundari</li> <li>•(Profession- Social Service)</li> <li>•Member since 14/12/2005</li> </ul>
Ms. Tara Yadav Member	<ul style="list-style-type: none"> <li>•Post Graduate in Political Science</li> <li>•(Profession- Govt Employee in JAC)</li> <li>•Member since 26/03/2012</li> </ul>
Mr. Banwari Sahu Member	<ul style="list-style-type: none"> <li>•Post Graduate in Mathematics</li> <li>•(Profession- School Teacher, DAV Ranchi)</li> <li>•Member since 28/07/2011</li> </ul>

## Women Composition in the Organisation

Programme and Administrative Staff	Male	Female	Total
Number of Full Time Staffs	31	35	66
Number of Part Time Staffs	12	18	30
Number of Paid Volunteers	86	114	200
Number of Consultant	6	4	10
Total	135	171	306

## 6.DISCLOSURES

### Entity



### Legal Status

- Registered Under Indian Trust Act 1882 : No. – 19526/1716/2005
- FCRA Registration: No.- 337800182
- Income Tax Act 12A : No.- VIII-210/12A/2008-09/734-36, & 80G
- Permanent Account No. (PAN) : AAATL5119M
- PPF A/c: JHRAN1573818000
- Professional Tax Reg. no: 20650313026
- ESI no: 60001577220000999
- NGO Darpan UID:JH/2011/0039596

### Financial Disclosures

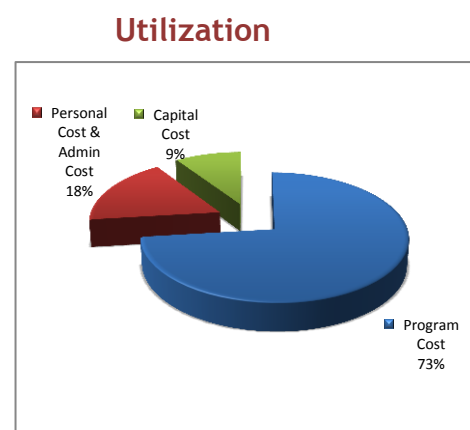
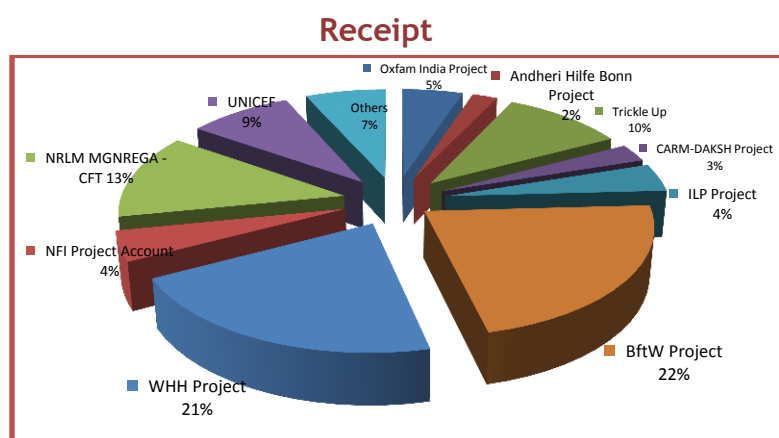
#### Financial Summary for the last 3 years

Year	Income	Expenditure
2015-16	27,424,285.91	29,670,739.54
2016-17	31,123,266.08	32,357,035.21
2017-18	44,366,465.66	37,879,641.40

## Audit and Accounts: Year 2014-15

Previous Balance	5,756,992.84
<b>Total Received During The Year:- 2018-19</b>	
<b>GRANT IN AID (F.C PROJECTS):</b>	-
Oxfam India Project Account	
Andheri Hilfe Bonn Project Account	
Trickle Up Project Account	
CARM-DAKSH Project Account	
ILP Project Account	
BftW Project Account	
WHH Project Account	
NFI Project Account	24,004,792.57
<b>GRANT IN AID ( NON F.C PROJECTS):</b>	-
NRLM MGNREGA -CFT Project Account	
MKSP Project Account	
Mahindra & Mahindra	
UNICEF	
Other Receipts	7,164,014.00
	2,234,611.00
Total Receipts for the Year	33,403,417.57
Total Fund Available for Utilization	39,160,410.41

## Receipt & utilization of Financial Resources



## Audit Report: 2018-2019



### ADITYA SHAH & ASSOCIATES

CHARTERED ACCOUNTANTS

#### AUDIT REPORT

We have examined the Balance Sheet as at 31<sup>st</sup> March 2019, Receipt and Payments Account & Income & Expenditure A/c for the year ended of Life Education and Development Support, Behind Old Sadar Thana, Tiril Road Kokar, Ranchi, Jharkhand.

We certify that the Balance Sheet, Receipt and Payments Account & Income & Expenditure A/c are in agreement with the books of account maintained by the Trust.

We report the following observations/comments/discrepancies/inconsistencies; if any;

1. These financial statements are the responsibility of the Management. Our responsibility is to express an opinion on these financial statements based on our Audit.
2. We conducted the Audit in accordance with Auditing Standards generally accepted in India. Those standards require that we plan and perform the Audit to obtain reasonable assurance about whether the financial statements are free of any material misstatements. An audit also includes examining on test basis evidence supporting the amounts and disclosures in the Financial Statements. An audit also includes assessing the accounting principles used and significant estimates made by the management as well as evaluating the overall financial statements presentation. We believe that our Audit provides a reasonable basis for our opinion.

#### Subject to above -

- (A) We have obtained all the information and explanations which, to the best of our knowledge and belief were necessary for the purpose of the audit.
- (B) In our opinion, proper books of account have been kept by the Trust so far as appears from our examination of the books.
- (C) In our opinion and to the best of our information and according to the explanations given to us, the said accounts, read with notes thereon, if any, give a true and fair view:
  - (i) in the case of the Balance Sheet, of the State of affairs of the assessee as at 31<sup>st</sup> March 2019 and
  - (ii) In the case of Income & Expenditure A/c, of the Surplus for year ended on that date.
  - (iii) In the case of Receipts & Payment A/c, of the Receipts and Payments for the year ended on that date.

Place: Ranchi

Date: 26/09/19

ADITYA SHAH & ASSOCIATES  
CHARTERED ACCOUNTANTS



Name Harender Bharti

Status Partner

Mem. No. 422216

FRN: 016257C

Address: Court Road, Ranchi

Unit No. 3-I, 3<sup>rd</sup> Floor, Shree Gopal Complex, Court Road, Ranchi - 834001 (Jharkhand), T: +91-651-2229163,  
E : aditya@shahassociate.com, www.shahassociate.com



Life Education and Development Support( LEADS)  
Behind Old Sadar Thana, Tiril Road, Kokar, Ranchi-834001  
( GLOBAL ACCOUNT)  
Balance Sheet As at (F.C. & N.F.C) 31st March 2019

CAPITAL & LIABILITIES	Sch.No.	Amount (₹ )	Total (₹ )
Corpus Fund			11,000.00
<u>General Fund:</u>			
As Per Last Account		9,781,599.84	
Add: Surplus for the Year		10,216.35	9,791,816.19
IOB Loan A/c			168,581.00
Liabilities for Payment	1		4,012,050.00
<b>GRAND TOTAL:</b>			<b>13,983,447.19</b>
<b>ASSETS</b>			
Net Fixed Assets	2		10,195,511.90
Current Asset	3		286,986.00
Loans & Advances			
<b>Closing Balance:</b>	<b>4</b>		<b>3,500,949.29</b>
Cash in Hand		3,033.00	
Cash at Bank:		3,497,916.29	
( In savings account with Indian Overseas Bank, Purulia Road Ranchi, Branch Ranchi.)			
<b>GRAND TOTAL:</b>			<b>13,983,447.19</b>

In terms of our report of even date

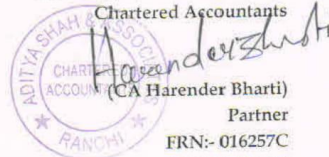
Place: Ranchi

Date: 29/07/19



For Aditya Shah & Associates

Chartered Accountants



(CA Harender Bharti)

Partner

FRN:- 016257C

M.No. 422216

UDIN:- 19422216AAAABJG185 .

Life Education and Development Support( LEADS)  
Behind Old Sadar Thana, Tiril Road, Kokar, Ranchi-834001  
( GLOBAL ACCOUNT)  
Income & Expenditure Account of (F.C. & N.F.C) for the Period from  
1st April 2018 to 31st March 2019

INCOME:	Sch. No.	Total (₹)
GRANT IN AID:		
Foreign Contribution:	6	24,684,296.57
GRANT IN AID:	7	7,141,546.48
Non F.C Project		
Other Income	8	1,868,113.00
		33,693,956.05
Grand Total :		33,693,956.05

EXPENDITURE:	Sch. No.	Total (₹)
PROJECT (F.C) :-		
1.OXFAM INDIA PROJECT:	9	1,641,281.48
2.ANDBERI HILFE BONN PROJECT:	10	683,497.00
3.TRICKLE UP PROJECT:	11	2,818,619.18
4. CARM- DAKSH (CD) PROJECT	12	1,005,254.76
5.INDIA LITERACY PROJECT (ILP) PROJECT:	13	1,339,742.96
6.NATIONAL FOUNDATION FOR INDIA (NFI) PROJECT:	14	1,361,380.36
07. WELTHHUNGERHILFE PROJECT (WHH II):	15	40,686.26
08. BFDW PROJECT:	16	5,602,005.04
09. WELTHHUNGERHILFE PROJECT (WHH I):	17	5,536,276.78
10. LEADS F.C GENERAL ACCOUNT:	18	659,367.70
Sub Total FC Projects		20,688,111.52



Life Education and Development Support( LEADS)  
Behind Old Sadar Thana, Tiril Road, Kokar, Ranchi-834001  
Income & Expenditure Account of (F.C. & N.F.C) for the Period from  
1st April 2018 to 31st March 2019

Non FC Projects		
11. MKSP PROJECT:	19	3,564,194.62
12. NRLM MGNREGA -CFT PROJECT:	20	5,726,886.22
13. UNICEF PROJECT:	21	2,539,276.08
14. LEADS GENERAL FUND:	22	762,045.26
		12,592,402.18
Sub Total Non FC Projects		
Depreciation :	2	403,226.00
Sub Total		33,683,739.70
Surplus for the Year		10,216.35
Grand Total:		33,693,956.05

In terms of our report of even date

Place: Ranchi

Date: 26/09/19



For Aditya Shah & Associates  
Chartered Accountants



(CA Harender Bharti)

Partner

FRN:- 016257C

M.No. 422216



Life Education and Development Support( LEADS)  
Behind Old Sadar Thana, Tiril Road, Kokar, Ranchi-834001  
( GLOBAL ACCOUNT)  
Receipts and Payments Account of (F.C. & N.F.C)for the Period from  
1st April 2018 to 31st March 2019

RECEIPTS:	Sch. No.	Amount (₹)	Total (₹)
OPENING BALANCE:	5		5,756,992.84
GRANT IN AID:	6		24,684,296.57
Foreign Contribution Received:			
GRANT IN AID:	7		7,164,014.00
Non F.C Project			
Other Receipts :	8		1,555,107.00
GRAND TOTAL :			39,160,410.41

PAYMENTS:		Amount (₹)	Total (₹)
PROJECT (F.C.):			
1.OXFAM INDIA PROJECT:	9		1,637,332.48
Program Cost:		1,215,978.68	
Personnel Cost :		211,233.00	
Administrative Cost:		210,120.80	
2.ANDBHERI HILFE BONN PROJECT:	10		659,526.00
Entitlement Realization of Marginalized Community Through Empowerment			
Program Cost:		355,462.00	
Personnel Cost :		244,000.00	
Administrative Cost:		60,064.00	
3.TRICKLE UP PROJECT:	11		3,046,244.18
Community Engagement For Sustainable Livelihoods and Financial Inclusion of the Ultra poor in Ramgarh and Hazaribag districts in Jharkhand			
Program Cost:		2,049,314.00	
Personnel Cost :		782,418.00	
Administrative Cost:		214,512.18	
4. CARM- DAKSH (CD) PROJECT	12		904,817.76
Strengthening the Beti Bacho Beti Padhao Program for changing gender narratives and norms, and for promoting skills and jobs in non-traditional occupations for girls and young women			
Program cost		613,659.00	
Personnel Cost		228,000.00	
Administrative Cost		63,158.76	
5.INDIA LITERACY PROJECT (ILP) PROJECT:	13		1,392,174.96
Bal Sashaktikaran Abhiyan: Ensuring Nutrition and Education Right of Children			
Program cost		605,554.00	
Personnel Cost		562,800.00	
Administrative Cost		191,820.96	
Infrastructure/Equipment's:		32,000.00	
Balance C/f			7,640,095.38



Life Education and Development Support( Global Account)  
Receipts and Payments Account of (F.C. & N.F.C) for the Period from  
1st April 2018 to 31st March 2019

Balance B/f			7,640,095.38
<b>6. NATIONAL FOUNDATION FOR INDIA (NFI) PROJECT:</b>	<b>14</b>		<b>1,512,736.36</b>
Promoting Inclusive Governance in Jharkhand through Budget Work			
Program Cost:		899,923.00	
Personnel Cost		473,338.00	
Administrative Cost		139,475.36	
<b>07. WELTHHUNGERHILFE PROJECT (WHH II):</b>	<b>15</b>		<b>2,711,724.16</b>
<u>REYADEN Life Centre- Construction of a Residential Primary School for Drop Out Tribal Boys and Girls:</u>			
Administrative Cost		5,286.26	
Infrastructure/Equipment's:		2,706,437.90	
<b>08. BFDW PROJECT:</b>	<b>16</b>		<b>5,835,919.04</b>
Rural Empowerment for Entitlement Realisation (REER)			
Program Cost:		4,875,384.00	
Personnel Cost		558,404.00	
Administrative Cost		402,131.04	
<b>09. WELTHHUNGERHILFE PROJECT (WHH I):</b>			
<u>Initiative for Transparent and Accountable Governance System in Jharkhand</u>	<b>17</b>		<b>5,545,657.78</b>
Program cost		5,020,317.00	
Personnel Cost		343,656.00	
Administrative Cost		181,684.78	
<b>10. LEADS F.C GENERAL ACCOUNT:</b>	<b>18</b>		<b>682,603.70</b>
Program cost		457,030.52	
Administrative Cost		194,316.18	
Capital Cost		31,257.00	
Sub Total F.C Projects			23,928,736.42
Non F.C Projects			
<b>11. MKSP PROJECT:</b>	<b>19</b>		<b>3,463,999.62</b>
Promotion of Women Farmers for Sustainable Development			
Program Cost:		3,373,038.00	
Administrative Cost		90,961.62	
<b>12. NRLM MGNREGA -CFT PROJECT:</b>			<b>4,302,635.22</b>
CFT COST	<b>20</b>		
Program cost		3,939,509.00	
Administrative Cost		363,126.22	
<b>13. UNICEF PROJECT:</b>	<b>21</b>		<b>2,507,609.60</b>
Result / Activity Up Scaling WinS			
Program Cost:		2,371,083.00	
Administrative Cost		136,526.60	
C/F			10,274,244.44





Life Education and Development Support( Global Account)  
Receipts and Payments Account of (F.C. & N.F.C)for the Period from  
1st April 2018 to 31st March 2019

	B/F		10,274,244.44
<b>14. LEADS GENERAL FUND:</b>	22		1,456,480.26
Program cost		299,207.00	
Administrative Cost		580,911.26	
Capital Cost		576,362.00	
Sub Total (Non F.C Projects)			11,730,724.70
<b>CLOSING BALANCE:</b>	4	3,500,949.29	3,500,949.29
<b>GRAND TOTAL :</b>			<b>39,160,410.41</b>

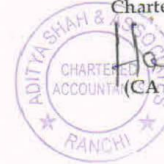
In the terms of our report of even date

Place: Ranchi

Date: 24/05/19



For Aditya Shah & Associates  
Chartered Accountants



(CA Harender Bharti)

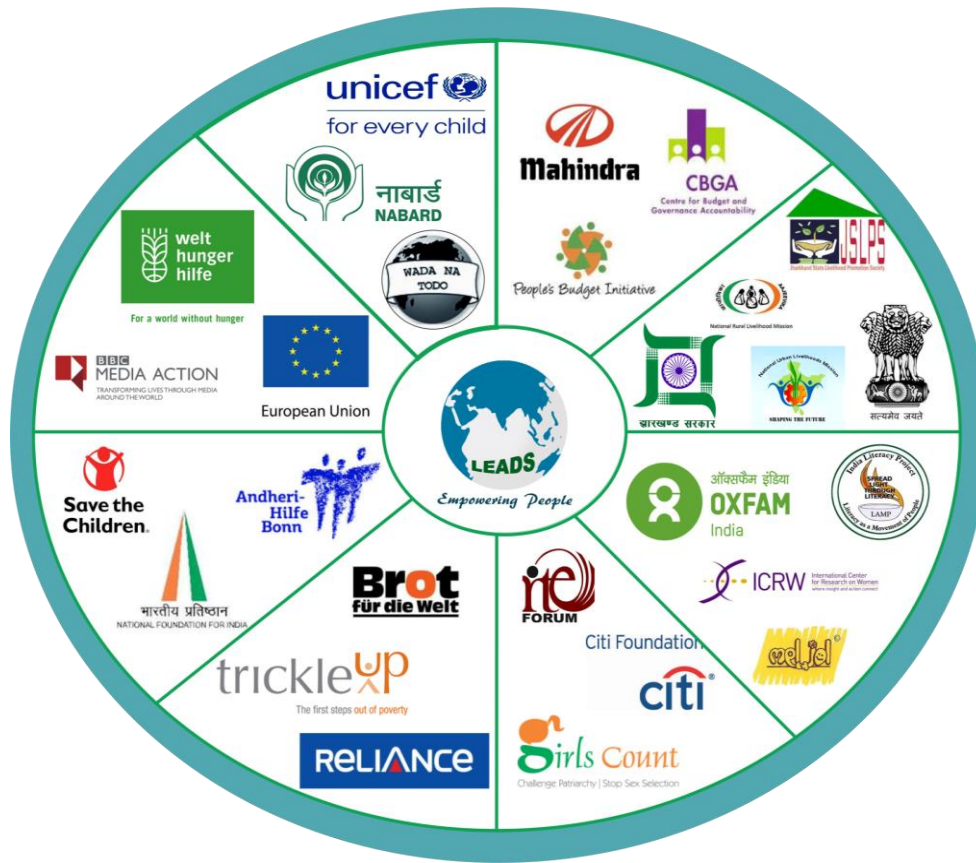
Partner

FRN:- 016257C

M.No. 422216



## 7. Our Partners in Development



## 8. Accreditation of LEADS by Credibility Alliance







# 10. LEADS in MEDIA



## 11. Capacity Building Programme of LEADS

### LEADS OFFERS FOLLOWING TRAININGS

SL	Training Programme	Who can participate	Duration	Total Part.
01	Lobby and Advocacy: Concept, Process and Approach	Senior Activist/staff	3 days	15-25
02	Organisational Development (OD)	Senior Mgt staff	3 days	15-20
03	Participatory Strategic Planning (PSP)	Prog and Mgt Staff	4 days	20-30
04	Participatory Micro Planning	Prog and Mgt Staff	4 days	20-30
05	Participatory Rural Appraisal (PRA)	Prog and Mgt Staff	4 days	20-30
06	Gender Sensitivity and women empowerment	Prog staff	3 days	20-30
07	MNREGA - 2005	Prog staff	2 days	30-50
08	Right to Information Act - 2005	Prog staff	1 day	30-50
09	Right to Education - 2009	Prog staff	1 day	30-50
10	People's Organisation and Self Help Group	Prog staff	4 days	20-30
11	Panchayati Raj Institution and Gram Sabha	Prog staff/PRI members	3 days	30-50
12	Tribal Development / Rights	Prog staff	3 days	20-30
13	Government Schemes	Prog staff	3 days	25-35
14	Child Rights	Prog staff	1 day	30-50
15	Social audits of various programmes	Field activist/staff	3 days	20-30
16	Concept and processes of Rights Based Approach	Prog staff	2 days	20-30

### Important Note :

LEADS organizes above mentioned all programmes on regular basis and participants from various organizations participate in the program from different parts of the country. LEADS also organizes all programmes on request of support agencies/networks/ individual organizations.





*Empowering People*

### Co-ordinating Office

203, Shree Maa Apartment, P. N. Bose Compound,  
Purulia Road, Ranchi-834001 (Jharkhand)

### Registered Office

Behind Old Sadar Thana,  
Tiril Road, Kokar, Ranchi - 834001  
Jharkhand, India  
Mobile : 08987583419  
Fax : 0651-2532304  
Email : [leadsindiajh@gmail.com](mailto:leadsindiajh@gmail.com)

### Resource & Training Center

LEADS Resource Center, Village Perka  
Block- Murhu, Dist Khunti, Jharkhand  
Contact no:07903734911  
Email : [leadsindiajh@gmail.com](mailto:leadsindiajh@gmail.com)